

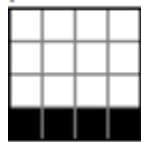
Summer & Winter Weave

“A Weave for All Seasons”

Translation Units for Summer & Winter Threading

Profile

Block A



Here we convert this unit on shaft one of the profile draft to a unit of summer and winter threading

=

3		3	
	2		
			1

Block B

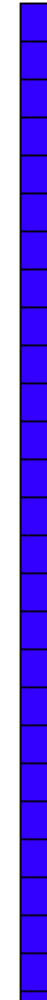
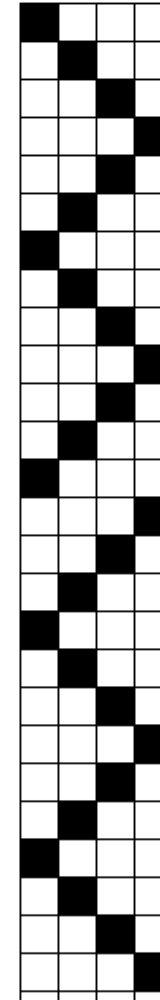
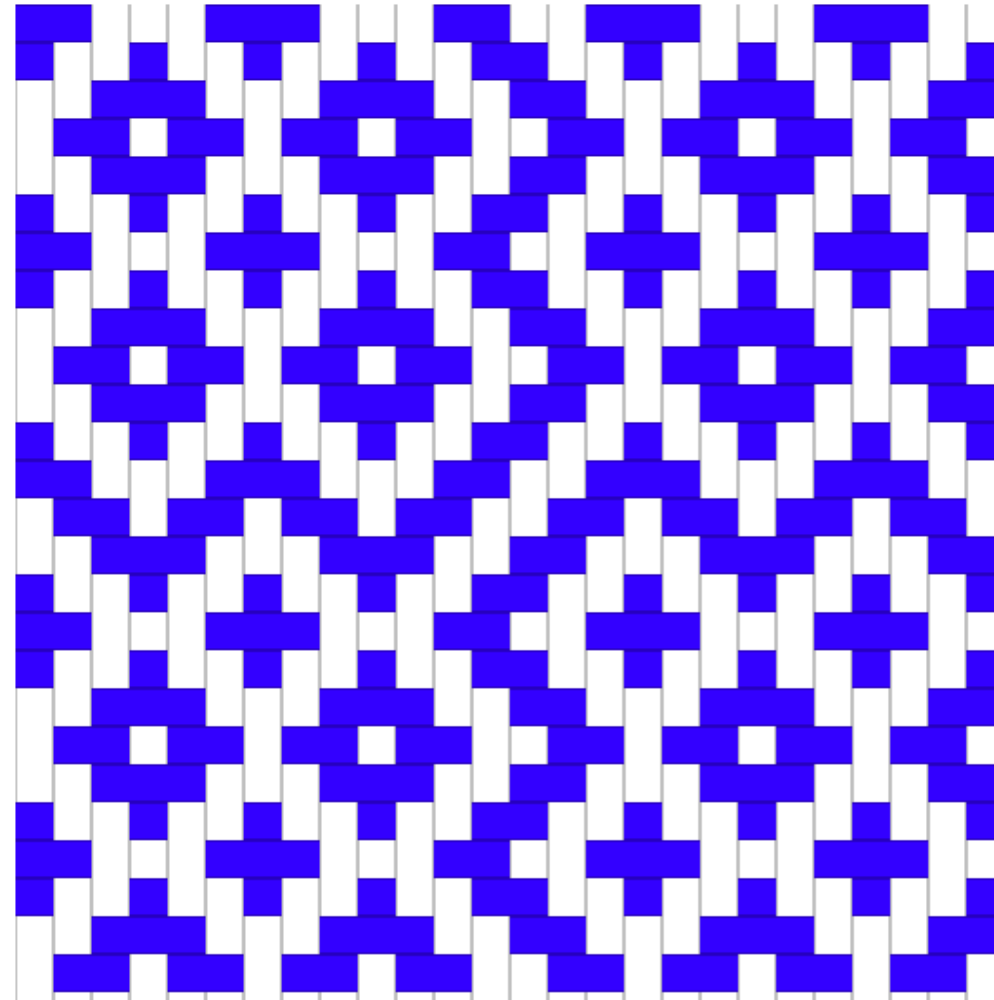
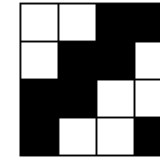
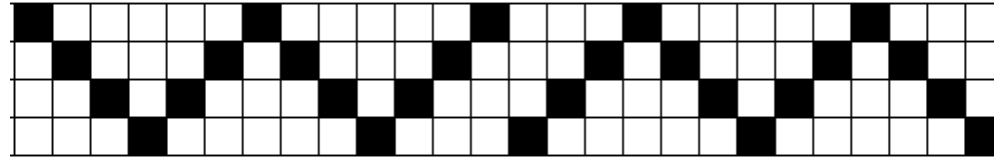
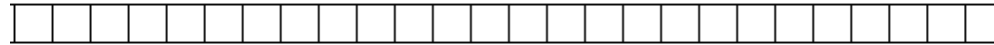


Likewise, we can convert a unit on shaft 2 of the profile draft to a second unit of summer & winter threading

=

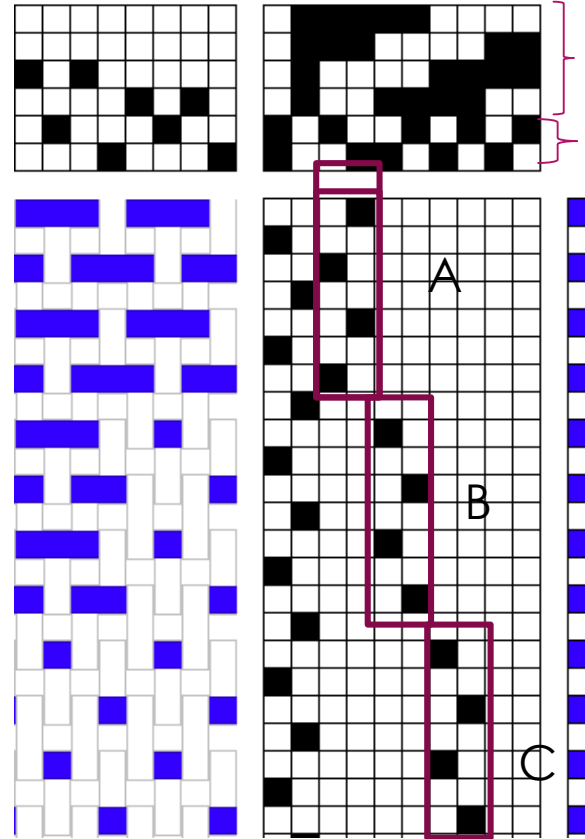
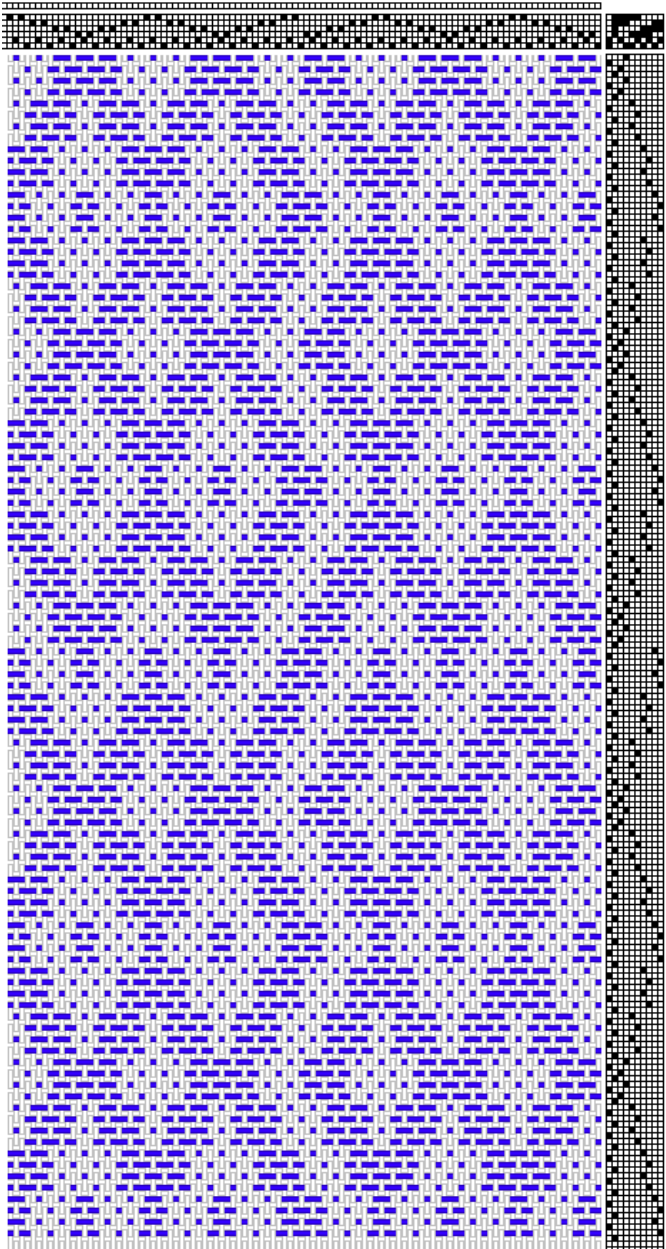
4		4	
	2		
			1

Four Block Profile
Draft



Summer & Winter Treadlings

- 1. Traditional (Brick)**
- 2. Dukagang**
- 3. X-style**
- 4. Birdseye style**
- 5. Two color polychrome (treadle on opposites)**
 - a. Tabby after every pattern pick (half pass)**
 - b. Tabby after every two pattern picks (single pass)**
- 6. Two color taquete (treadle on opposites)- No tabby**



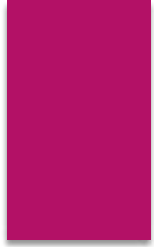
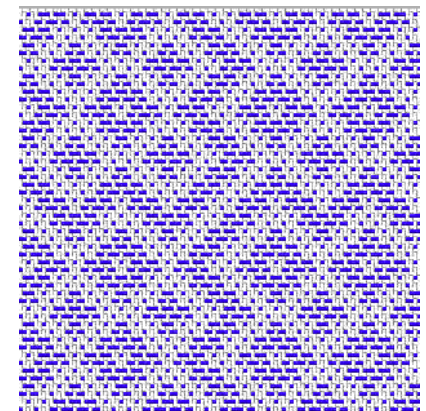
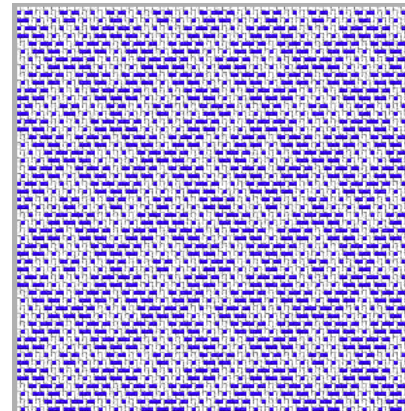
Pattern
Ties

Traditional Treading (Bricks)

- Alternates ties 1 & 2 with pattern
- Balanced appearance on both sides

Side 1 (summer)

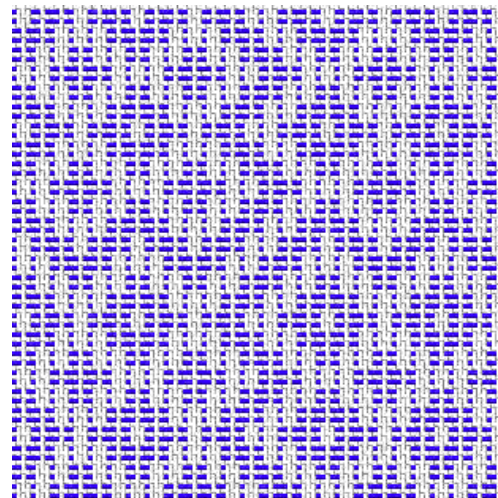
Side 2 (winter)



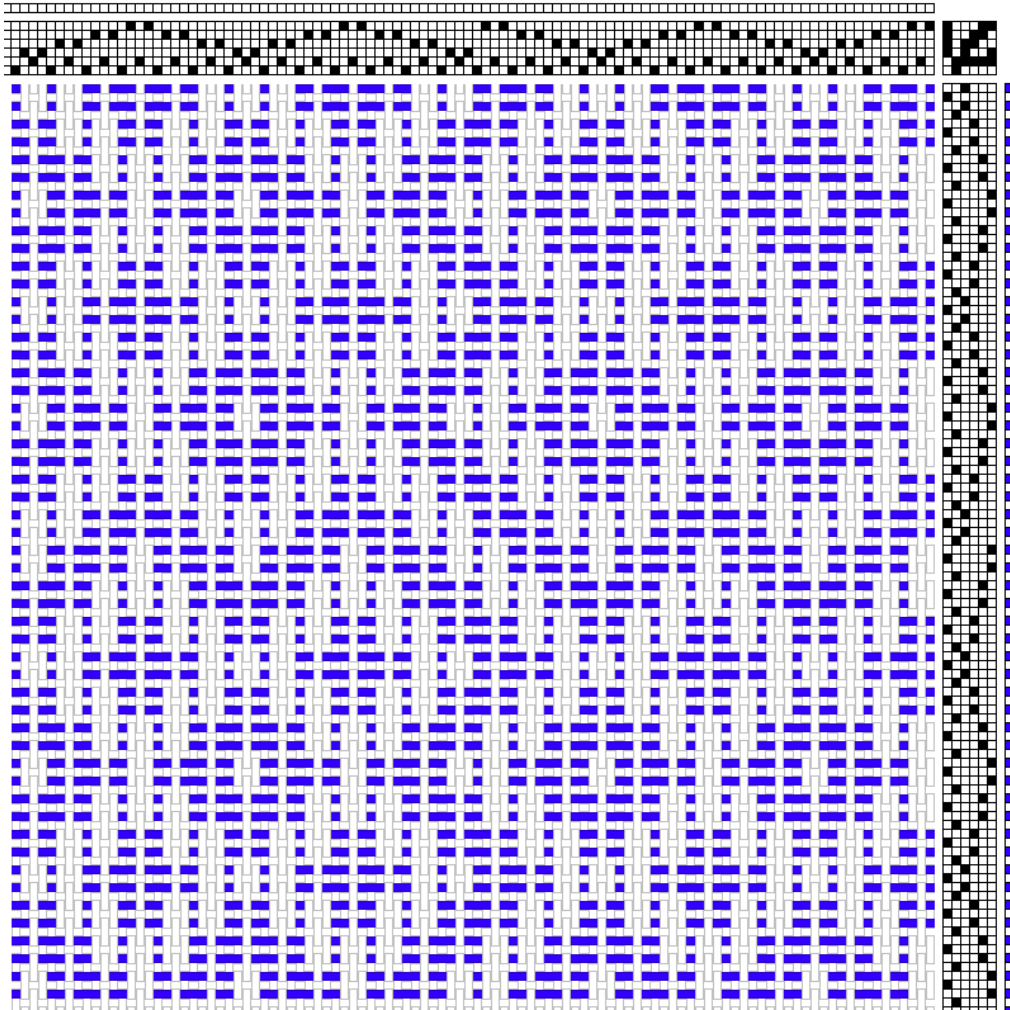
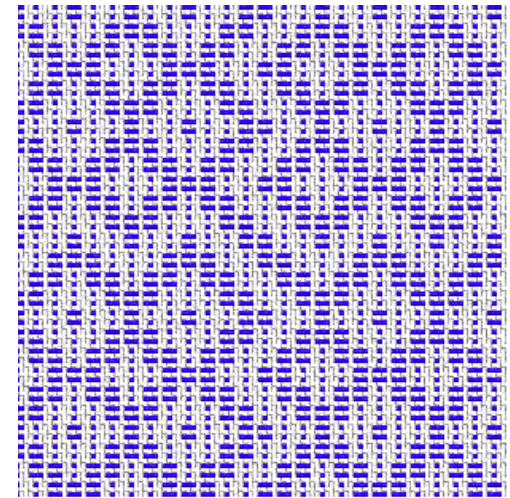
Dukagang

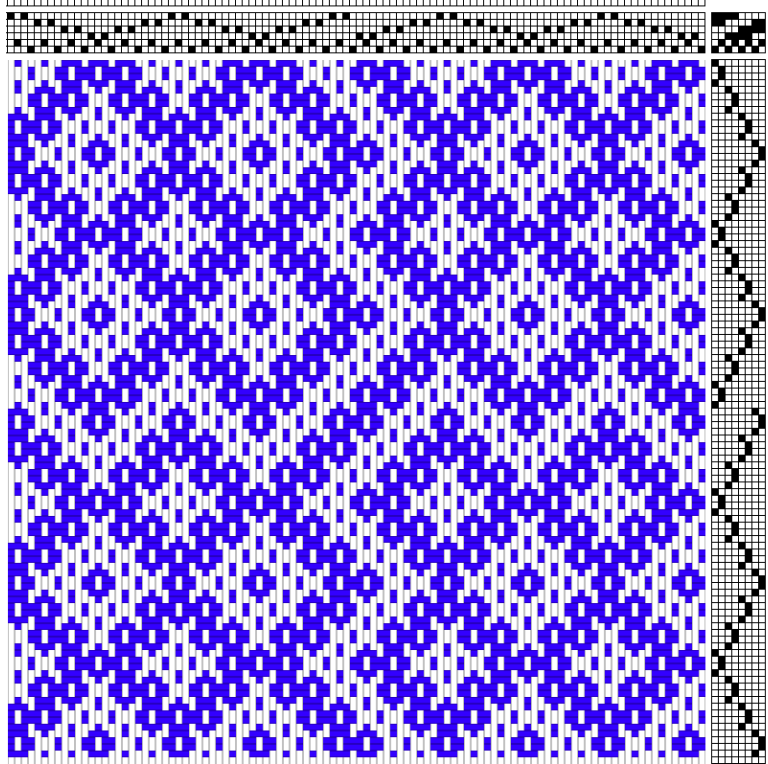
- Uses only one tie with pattern
- Fewer treadles
- Columnar effect

Side 1

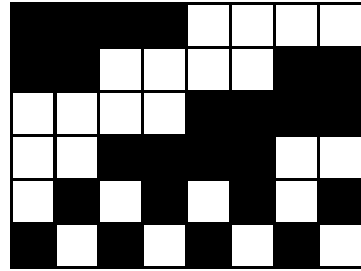


Side 2

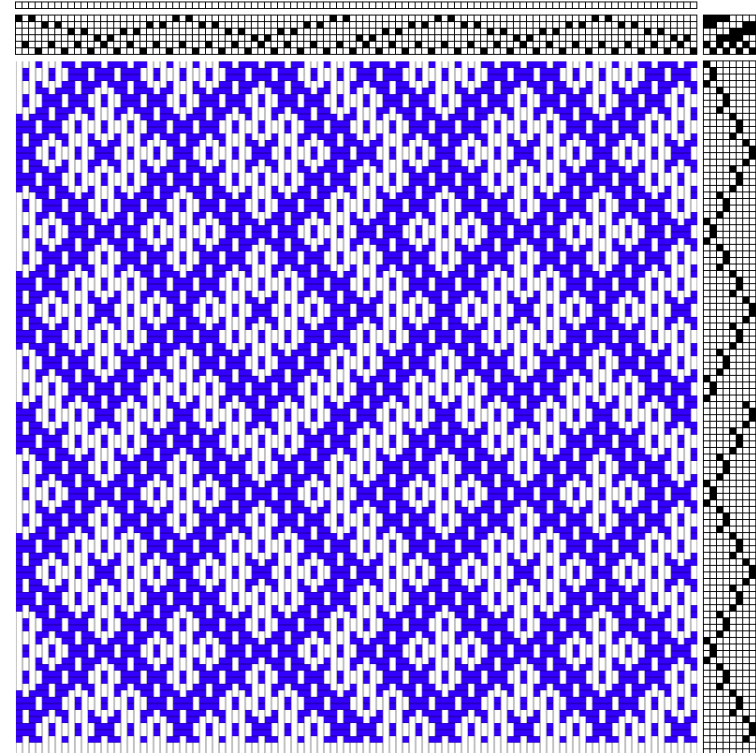
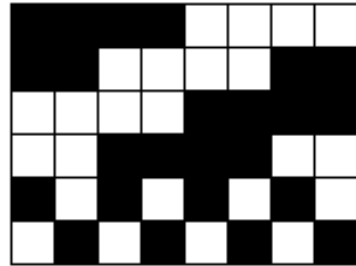




Birdseye (O)

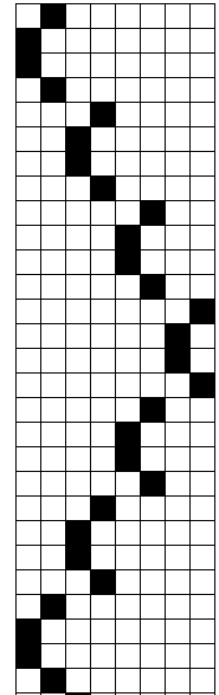


X-style (X)

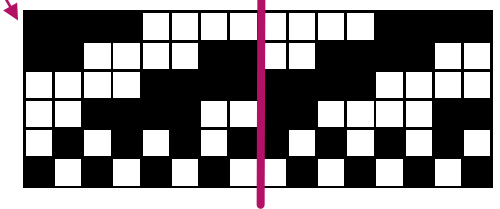
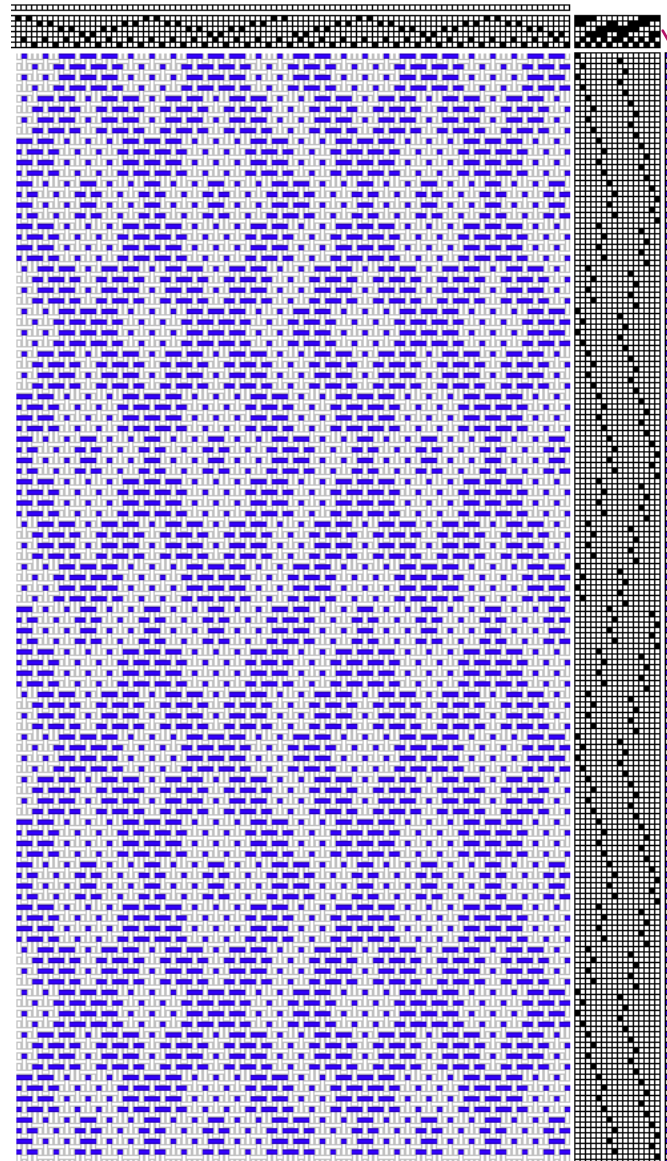


The difference is in the tie sequence

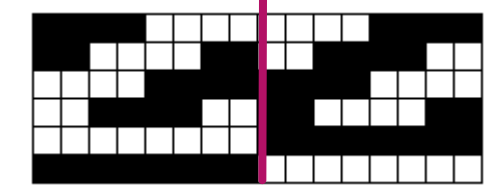
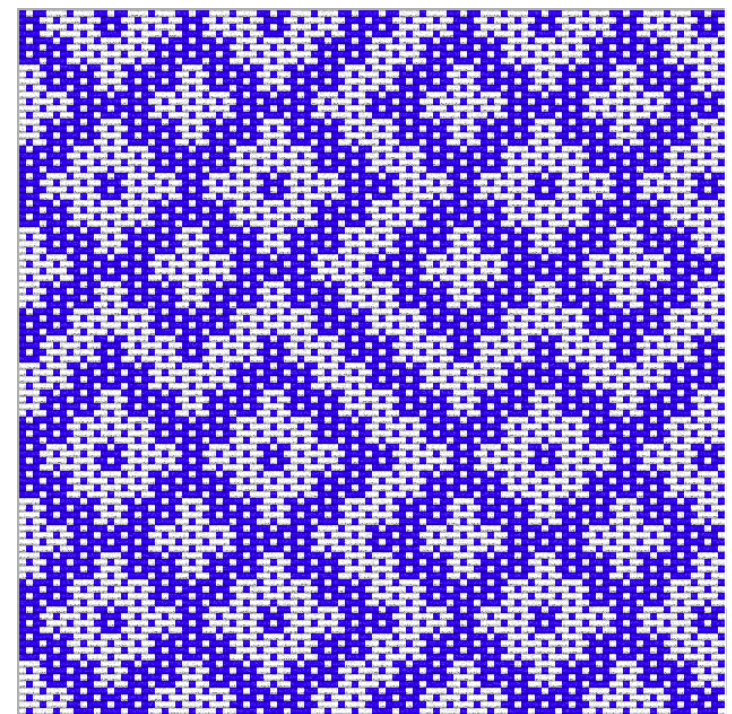
Alternate using
Birdseye tie-up



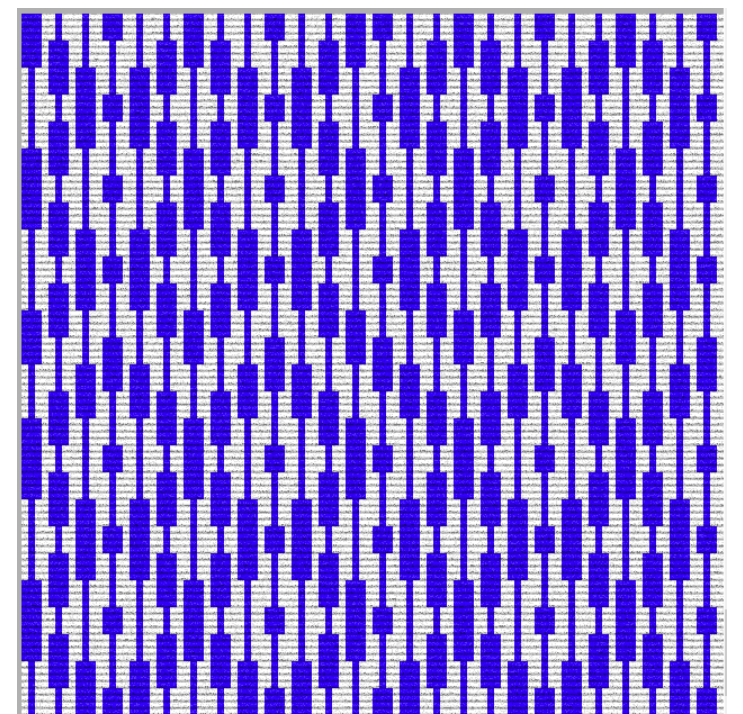
Polychrome and Taquete (weft-faced summer & winter)



Polychrome



Weft-faced Taquete



Uses for Summer & Winter

- ❖ Towels
- ❖ Coverlets, blankets and throws
- ❖ Upholstery and pillows
- ❖ Garments (limited)

- ❖ Attributes:
 - ✓ Reversible
 - ✓ Balanced warp-wise and weft-wise
 - ✓ Sturdy; short floats

- ❖ Detriments
 - Can be bulky and stiff and may not drape well